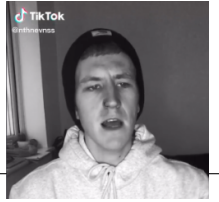


# WELLERMAN

- INSPIRED BY THE NATHAN EVANS → TIKTOK VIDEO, AND ALL THE SHANTY TOX JOY IT BROUGHT TO THE WORLD
- ORIG. A FOLKSONG/SEASHANTY FROM 19<sup>TH</sup> CENTURY NEW ZEALAND



CAPO 3<sup>RD</sup> FRET

TEMPO = 96 BPM

KEY OF A MINOR

PLAY 2 STRUMS OF EACH CHORD SHOWN BELOW  
(THIS WILL MATCH NATHAN'S FIST STOMPS)

## VERSE

There once was a ship that put to sea..... the name of the ship was the Billy of Tea  
 The winds blew up, her bow dipped down... o blow, my bully boys, blow

## CHORUS

Soon----- may the Wellerman come..... to bring us sugar and tea and rum  
 One day, when the tinguin' is done... we'll take our leave and go

She had not been two weeks from shore... when down on her, a right whale bore  
 The captain called all hands and swore... he'd take that whale in tow

[ repeat chorus ]

Before the boat had hit the water... the whale's tail, came up and caught her  
 All hands to the side, harpooned and fought her... when she dived down 'low

[ repeat chorus ]

No line was cut, no whale was freed... the Captain's mind was not on greed  
 But he belonged to the whaleman's creed... she took the ship in tow

[ repeat chorus ]

For forty days, or even more... the line went slack, then tight once more  
 All boats were lost, there were only four... but still that whale did go

[ repeat chorus ]

As far as I've heard, the fight's still on... the line's not cut and the whale's not gone  
 The Wellerman makes his regular call... to encourage the Captain, crew, and all

[ repeat chorus x2, end]

\* Normally, this is an E-MAJOR CHORD... BUT IN the popular version of this song by THE LONGEST JOHNS they use a D-MINOR here in THE FINAL VERSE only, to great effect.

